

Techno Wood Lathe Setup Guide



-HAVE A LICENCED ELECTRICIAN PERFORM ALL ELECTRICAL CONNECTIONS BASED ON YOUR AREA'S LOCAL CODES-

Techno Wood Lathe Setup Guide

Step I: Unpacking Techno Lathe

Once you have received your Techno Wood Lathe, carefully unwrap and check each item.

Step II: Checking the Contents

After your Techno Wood Lathe is unpacked proceed to check that you have all the contents needed to operate your machine. The following items should all be included:

Techno Wood Lathe



Techno Software CD-ROM Lathe PCI Card



Drill Chuck and Adapter



Steady Rest Support, 90° Tool Support and Steady Rest in order)



Live Center (Upper Left) and Spur Center



Center Cut Tools

Techno Wood Lathe Setup Guide



-HAVE A LICENCED ELECTRICIAN PERFORM ALL ELECTRICAL CONNECTIONS BASED ON YOUR AREA'S LOCAL CODES-

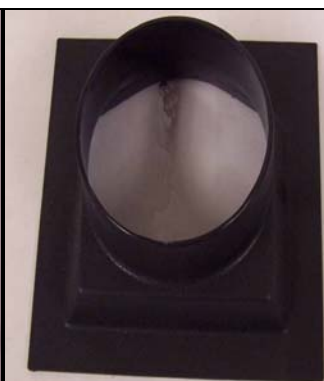
Step II:

Checking the Contents (cont)

Teacher's Override Key



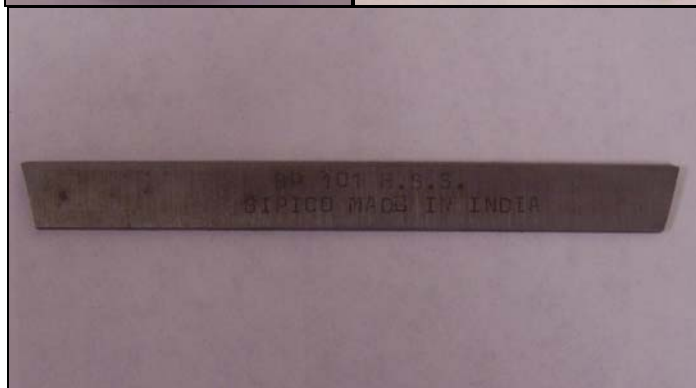
Dust Hose Adapter



Face Plate



Spur Removal Tool



Parting Tool



Quick Change Tool Post Set



-HAVE A LICENCED ELECTRICIAN PERFORM ALL ELECTRICAL CONNECTIONS BASED ON YOUR AREA'S LOCAL CODES-

Step III:

Installing Servo PCI Card and Connector

Minimum System Requirements

- Windows 98, ME, 2000 or XP
- Pentium II or Celeron 600 MHz processor
- 1 available PCI slot

WARNINGS

- *Make sure to install the Interface Card before the software.*
- *Power to PC MUST be OFF during installation.*
- *The PCI Card's connectors mate with the PC Mother Board's connectors only one way.*
- ***IMPORTANT: GROUND YOURSELF DURING INSTALLATION!***

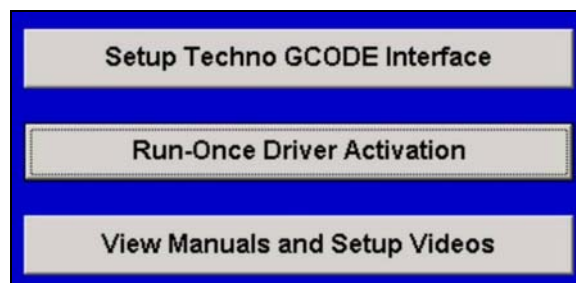
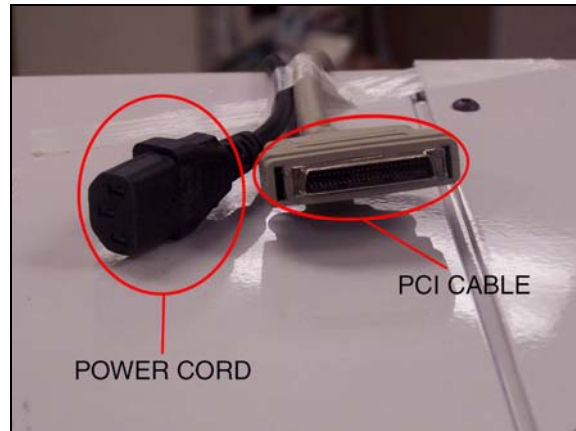
Installing the Servo PCI Card

1. Turn off and unplug power to your computer. Remove the cover.
2. Remove the PCI Card from its protective packaging and locate a vacant PCI slot in your computer. Remove slot cover.
3. Gently but firmly insert the PCI card into the vacant PCI slot. Secure with screw.
4. Replace computer cover; connect PCI cable from Controller Box to PCI Card. Next plug in lathe and turn computer on.

NOTE:

When Windows starts up, it will detect the new hardware(the PCI Card). Follow the prompts. When you are asked to "search" for a suitable driver, insert Techno CD. When asked for "optional search locations" choose CD.

5. After the driver is installed, click on the **Run-Once Driver Activation** (on Techno CD-ROM). Then continue with Software Installation (**Setup Techno GCODE Interface**); follow the screen instructions.




Techno Wood Lathe Setup Guide

Step IV: Software Installation

NOTE: *Some computers will begin "AUTO-RUN" sequence when Techno CD-ROM is inserted. If this occurs skip Steps 1- 3 and begin with Step 4.*

1. Place Techno CD-ROM in computer. On the desktop, double click the "My Computer" Icon. (Figure 4.1)
2. Double click the CD-ROM Drive to open.
3. Find and click the file "**setup.exe**".
4. In the **Techno Software Setup** menu select *More*. (Figure 4.2) Follow to next screen.
5. On **Techno Software Setup (page 2)** menu select *Wood Lathe*. (Figure 4.3)
6. Select **Setup Techno GCODE Interface** in *Techno Wood Lathe* menu. (Figure 4.4)
7. Follow instructions through installation. Close all running programs.

8. Click  button to start installation.
9. Follow all onscreen instructions to complete installation.

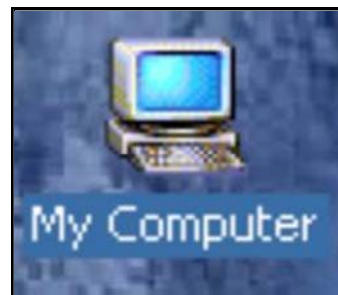


Figure 4.1



Figure 4.2

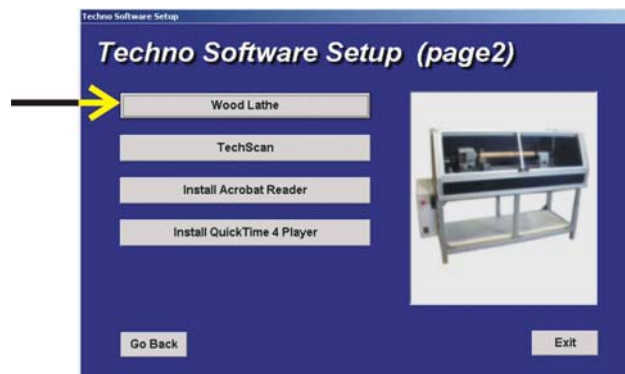


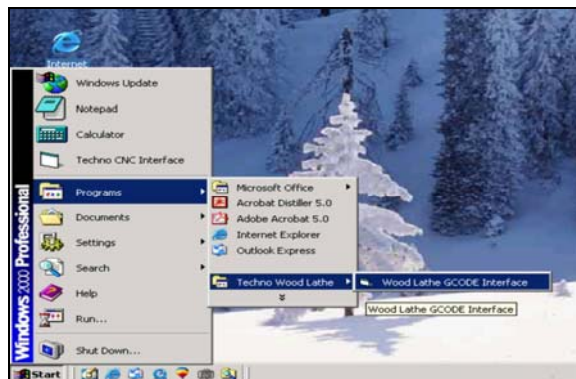
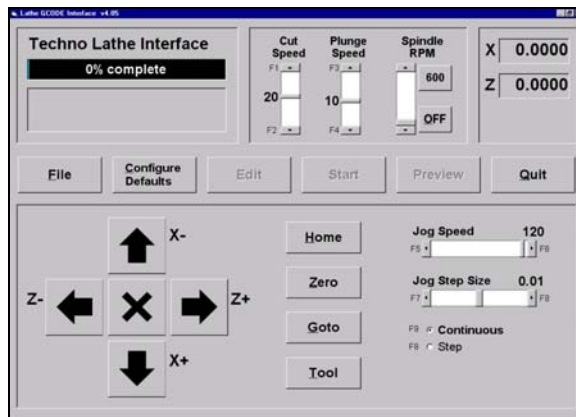
Figure 4.3



Figure 4.4

Techno Wood Lathe Setup Guide**Step IV:****Opening the Installed Software**

1. Go to **Start Menu, Programs**
2. Select **Techno Wood Lathe**
3. Click **Wood Lathe GCODE Interface** (Figure 4.5)
4. Choose from *Techno Lathe Interface* operating options. (Figure 4.6)

**Figure 4.5****Figure 4.6**

CAUTION: DO NOT PROCEED ANY FURTHER UNTIL YOU HAVE READ THE SAFETY INSTRUCTIONS AND CONSULTED THE MANUAL !

SAFE OPERATION OF YOUR MACHINE

Read these instructions thoroughly BEFORE operating machine

WARNING! IMPROPER OR UNSAFE OPERATION OF THE MACHINE MAY RESULT IN PERSONAL INJURY AND/OR DAMAGE TO THE EQUIPMENT.

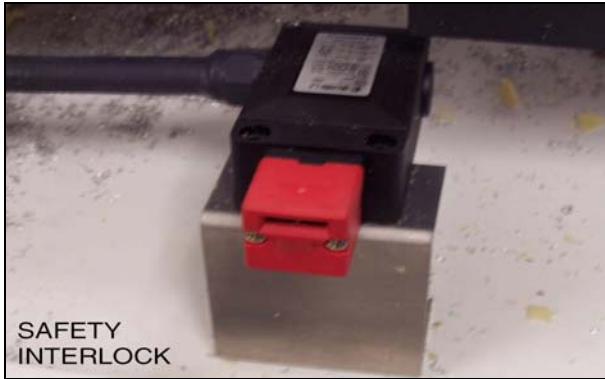
1. Keep fingers, hands, and all other objects away from machine while power is on.
2. Disconnect power to all system components when not in use, when changing accessories, and before servicing.
3. Do not loosen, remove, or adjust machine parts or cables while power is on.
4. Exercise care with machine controls and around keyboard to avoid unintentional starting.
5. Make sure voltage supplied is appropriate to specifications of components.
6. Machines must be plugged into three-pronged grounded outlets. Do not remove the grounding plug or connect into an ungrounded extension cord.
7. Keep cables and cords away from heat, oil, and sharp edges. Do not overstretch or run them under other objects or over work surfaces.
8. Use proper fixtures and clamps to secure work. Never use hands to secure work.
9. Do not attempt to exceed limits of machine.
10. Do not attempt to use machine for purposes other than what is intended.
11. Use machine only in clean, well-lit areas free from flammable liquids and excessive moisture.
12. Stay alert at all times when operating the machine.
13. Always wear safety goggles.
14. Do not wear loose-fitting clothing when operating machine. Long hair should be protected.
15. Always maintain proper balance and footing.
16. Maintain equipment with care. Keep cutting tools clean and sharp. Lubricate and change accessories when necessary. Cables and cords should be inspected regularly. Keep controls clean and dry.
17. Check for damaged parts. An authorized service center should perform all repairs. Only identical or authorized replacement parts should be used.
18. Remove any adjusting keys and wrenches before turning machine on.
19. Lock the Safety Interlock mechanism otherwise the program will not start.
20. Put Teacher's Override Key in a safe place.
21. Do not forget to take the Chuck Keys out before running the Metal Lathe Overview.
22. The metal shavings in the machine can be very sharp and must be handled carefully.

DO NOT:

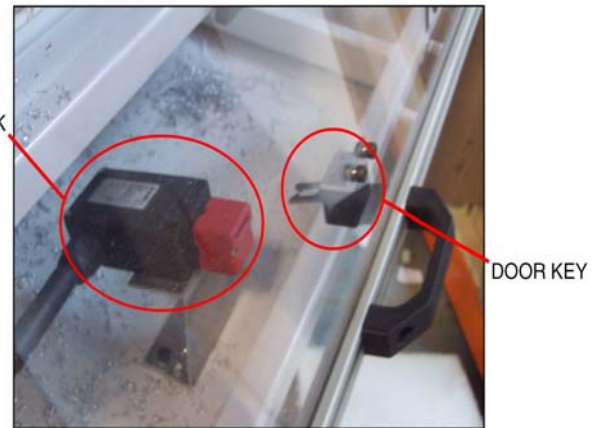
- OPERATE MACHINE IF YOU ARE UNFAMILIAR WITH THESE SAFE OPERATING INSTRUCTIONS.
- DO NOT OPERATE MACHINE WITHOUT KNOWING WHERE THE EMERGENCY STOP SWITCH IS LOCATED.
- SEE NEXT PAGE FOR VISUAL DIAGRAMS OF IMPORTANT

IMPORTANT VISUAL SAFETY

-7-



The *Safety Interlock*, if not properly locked with either *Door Key* or *Teacher's Override Key* will prevent the program from starting.



The *Door Key* must be properly locked within the *Safety Interlock* in order to run the program.

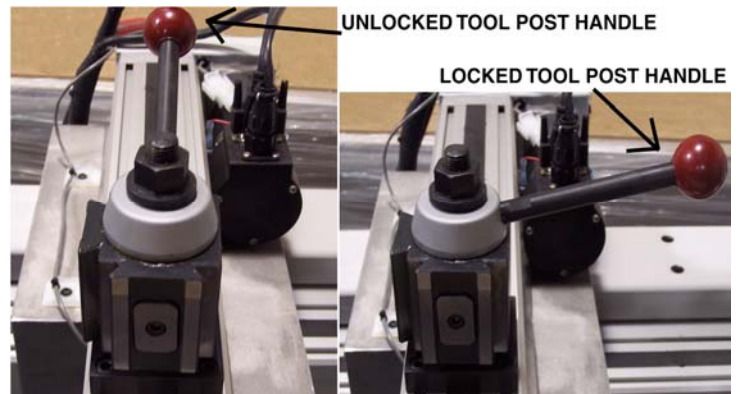


The *Teacher's Override Key* must be put away in a safe place.



The *Teacher's Override Key* gets placed in the *Safety Interlock* to run the program without the *Door Key*.

WARNING! The *Teachers Override Key* allows the spindle to be turned on when the door is open!



The *Tool Post Handle* Locks the *Tool Holder* in position. If the *Tool Post Handle* is not locked properly in position the *Tool Holder* will fly off Lathe and cause damage to the machine.

Techno Wood Lathe Setup Guide

Step V:

Loading Workpiece in Wood Lathe

NOTE: DO NOT try to hammer the wood stock onto the Spur while the Spur is in the Headstock!

The Tool Holder, Spur and Tail Stock

- The **LOCK NUT** secures the **HEIGHT ADJUSTING NUT**.
- The **HEIGHT ADJUSTING NUT** allows you to adjust the height of the tool relative to the midpoint of the workpiece.
- The **TOOL SECURING SCREWS** secure the **TOOL** within the **TOOL HOLDER**. Note that it is required to have **AT LEAST TWO TOOL SECURING SCREWS** secured against the tool during Lathe operation.
- The cutting edge of the **TOOL** **must** be facing **downward** when placed in the **TOOL HOLDER**. (Figure 5.0)
- After positioning the tool on the **TOOL POST**, check to make sure that the **TOOL TIP** is slightly higher than the **SPUR TIP** and the **LIVE CENTER TIP**. (Figures 5.1 and 5.2) If it is not, loosen the **LOCK NUT** and adjust the tool height with the **HEIGHT ADJUSTING NUT** and lock the **TOOL POST** lever to confirm the tool height.

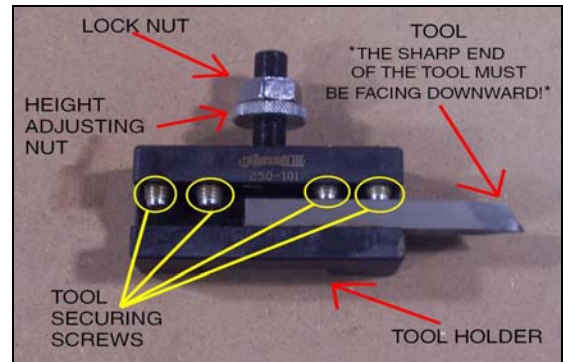


Figure 5.0

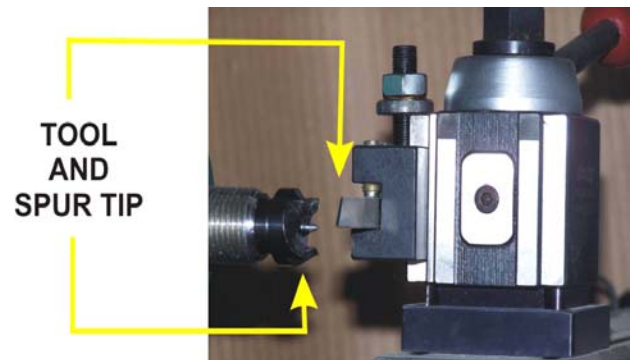


Figure 5.1

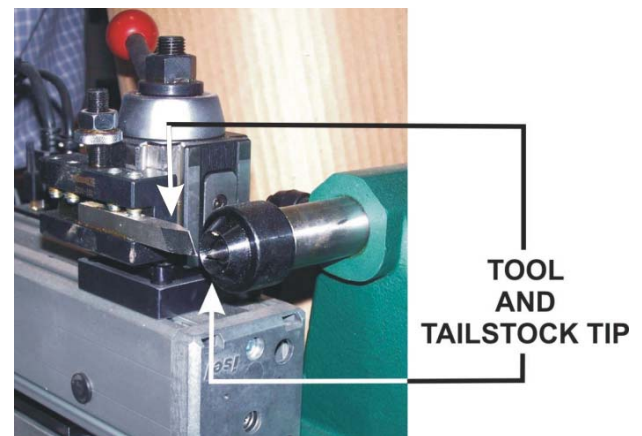


Figure 5.2

Loading the Workpiece

1. The **Spur Removal Tool** must be inserted through the back end of the **Head stock**. (Figure 5.3)
2. Use the **Tool** to tap the back of the **Spur** while holding the spur so it does not fall.



Figure 5.3

Techno Wood Lathe Setup Guide

Step V:

Loading Workpiece in Wood Lathe (cont)

3. Mark the centers of both ends of the wood stock with a nail. (Figure 5.4)
4. Hammer the Spur into the wood. (Figure 5.5) **If wood is very hard follow these directions:**
 - Hammer the **Spur** into the wood **LIGHTLY**.
 - Use a hand saw to cut grooves in the wood where the spur teeth left marks.
 - Hammer the **Spur** into the end of the wood using the saw cuts.
 - The center mark should be at *least* ¼" deep on the end that will be held by the **Tailstock**.

Warning: *If not followed wood might split with pressure!*

5. Loosen **Tailstock Lever** and push **Tail Stock** to secure the wood between **Tailstock** and **Headstock**, and then secure the **Tailstock** by locking the lever. (Figure 5.6)
6. Loosen **Taper Lock Lever** and use the handle to tighten the grip on the wood. **Figure 5.7** is the work piece loaded in the Wood Lathe.

NOTE: *DO NOT use the handle to try and push the live center into the wood. The Tailstock will slip. Once the wood is secured tighten the Taper Lock Lever.*

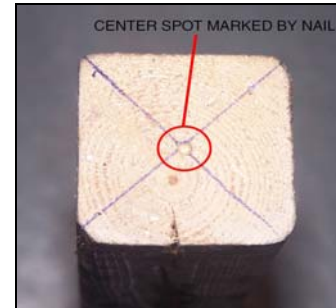


Figure 5.4

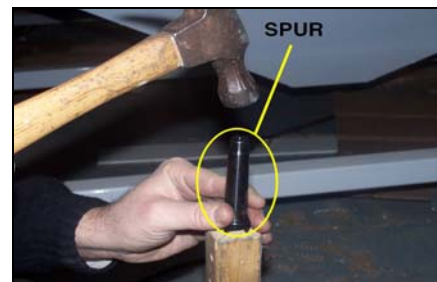


Figure 5.5

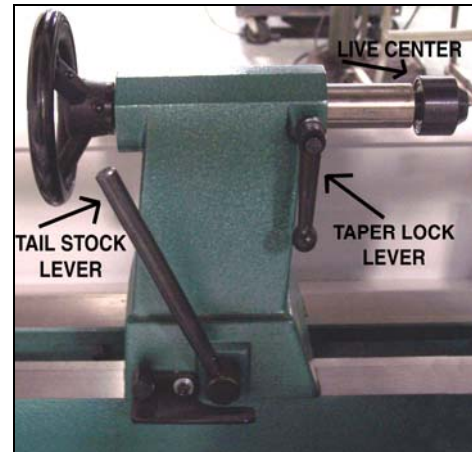


Figure 5.6

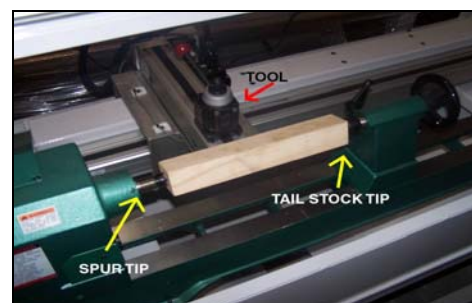


Figure 5.7